

FN018E

## Cadru superior si inferior

Descriere	Amb.	Art Nr.
Cadru superior/inferior L450 P400	1	<b>FN018E</b>
Cadru superior/inferior L700 P400	1	<b>FN021E</b>
Cadru superior/inferior L900 P400	1	<b>FN023E</b>
Cadru superior/inferior L1000 P400	1	<b>FN024E</b>
Cadru superior/inferior L450 P600	1	<b>FN020E</b>
Cadru superior/inferior L700 P600	1	<b>FN029E</b>
Cadru superior/inferior L900 P600	1	<b>FN031E</b>
Cadru superior/inferior L1000 P600	1	<b>FN032E</b>
Cadru superior/inferior L450 P800	1	<b>FN022E</b>
Cadru superior/inferior L700 P800	1	<b>FN013E</b>
Cadru superior/inferior L900 P800	1	<b>FN017E</b>
Cadru superior/inferior L1000 P800	1	<b>FN037E</b>



FN438E

## Soclu

Descriere	Amb.	Art Nr.
Soclu H100 L400 P400	1	<b>FN438E</b>
Soclu H100 L700 P400	1	<b>FN441E</b>
Soclu H100 L900 P400	1	<b>FN443E</b>
Soclu H100 L1000 P400	1	<b>FN444E</b>
Soclu H100 L400 P600	1	<b>FN440E</b>
Soclu H100 L700 P600	1	<b>FN451E</b>
Soclu H100 L900 P600	1	<b>FN453E</b>
Soclu H100 L1000 P600	1	<b>FN454E</b>
Soclu H100 L400 P800	1	<b>FN442E</b>
Soclu H100 L700 P800	1	<b>FN433E</b>
Soclu H100 L900 P800	1	<b>FN437E</b>
Soclu H100 L1000 P800	1	<b>FN459E</b>



FN046E

## Montanti

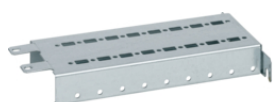
Descriere	Amb.	Art Nr.
Montanti H1900	1	<b>FN046E</b>
Montanti H2100	1	<b>FN047E</b>



FN286E

## Montant divizor vertical

Descriere	Amb.	Art Nr.
Montant divizor vertical H1900	1	<b>FN286E</b>
Element separare vertical H2100	1	<b>FN287E</b>



FN289E

## Montant divizor orizontal

Descriere	Amb.	Art Nr.
Montant divizor orizontal P400	1	<b>FN289E</b>
Montant divizor orizontal P600	1	<b>FN291E</b>
Montant divizor orizontal P800	1	<b>FN292E</b>



FN696E

## Kit montanti functionali

Descriere	Amb.	Art Nr.
Kit montanti functionali H1900 mm	1	<b>FN696E</b>



FN896E

## Kit montanti functionali H1600mm

Descriere	Amb.	Art Nr.
Kit montanti functionali H1600	1	<b>FN896E</b>



FN078E

## Placa trecere cablu

Descriere	Amb.	Art Nr.
Placa trecere cablu plina L400 P400	1	<b>FN078E</b>
Placa trecere cablu plina L700 P400	1	<b>FN081E</b>
Placa trecere cablu plina L900 P400	1	<b>FN083E</b>
Placa trecere cablu plina L1000 P400	1	<b>FN084E</b>
Placa trecere cablu plina L400 P600	1	<b>FN080E</b>
Placa trecere cablu plina L700 P600	1	<b>FN089E</b>
Placa trecere cablu plina L900 P600	1	<b>FN091E</b>
Placa trecere cablu plina L1000 P600	1	<b>FN092E</b>
Placa trecere cablu plina L400 P800	1	<b>FN082E</b>
Placa trecere cablu plina L700 P800	1	<b>FN073E</b>
Placa trecere cablu plina L900 P800	1	<b>FN077E</b>
Placa trecere cablu plina L1000 P800	1	<b>FN121E</b>



FN101E

## Placa trecere cablu reglabila

Descriere	Amb.	Art Nr.
Placa trecere cablu reglabila L400 P400	1	<b>FN098E</b>
Placa trecere cablu reglabila L700 P400	1	<b>FN101E</b>
Placa trecere cablu reglabila L900 P400	1	<b>FN103E</b>
Placa trecere cablu reglabila L1000 P400	1	<b>FN104E</b>
Placa trecere cablu reglabila L400 P600	1	<b>FN100E</b>
Placa trecere cablu reglabila L700 P600	1	<b>FN109E</b>
Placa trecere cablu reglabila L900 P600	1	<b>FN111E</b>
Placa trecere cablu reglabila L1000 P600	1	<b>FN112E</b>
Placa trecere cablu reglabila L400 P800	1	<b>FN102E</b>
Placa trecere cablu reglabila L700 P800	1	<b>FN093E</b>
Placa trecere cablu reglabila L900 P800	1	<b>FN097E</b>
Placa trecere cablu reglabila L1000 P800	1	<b>FN117E</b>



FN546E

## Usa opaca

Descriere	Amb.	Art Nr.
Usa opaca H1900 L448	1	<b>FN546E</b>
Usa opaca H1900 L700	1	<b>FN506E</b>
Panou spate H1900 L200	1	<b>FN266E</b>
Panou spate H1900 L300	1	<b>FN206E</b>
Usa opaca H2100 L450	1	<b>FN547E</b>
Usa opaca H2100 L900	1	<b>FN527E</b>
Usa opaca H2100 L700	1	<b>FN507E</b>
Usa opaca H1900 L900	1	<b>FN526E</b>



FN510E

## Usa transparenta

Descriere	Amb.	Art Nr.
Usa transparenta H1900 L450	1	<b>FN510E</b>
Usa transparenta H1900 L700	1	<b>FN516E</b>
Panou spate H1900 L200	1	<b>FN266E</b>
Panou spate H1900 L300	1	<b>FN206E</b>
Usa transparenta H2100 L450	1	<b>FN511E</b>
Usa transparenta H2100 L700	1	<b>FN517E</b>
Usa transparenta H2100 L900	1	<b>FN537E</b>
Usa transparenta H1900 L900	1	<b>FN536E</b>



FN266E

## Panou spate

Descriere	Amb.	Art Nr.
Panou spate H1900 L200	1	<b>FN266E</b>
Panou spate H1900 L300	1	<b>FN206E</b>
Panou fata H1900 L448	1	<b>FN216E</b>
Panou fata H1900 L700	1	<b>FN276E</b>
Panou fata/spate opac H1900 L900	1	<b>FN296E</b>
Panou fata H1900 L1000	1	<b>FN246E</b>
Panou fata/spate opac L400 H2100	1	<b>FN217E</b>
Panou fata/spate opac L200 H2100	1	<b>FN267E</b>
Panou fata/spate opac L700 H2100	1	<b>FN277E</b>
Panou fata/spate opac H2100 L900	1	<b>FN297E</b>
Panou fata/spate opac L300 H2100	1	<b>FN207E</b>
Panou fata/spate opac L1000 H2100	1	<b>FN247E</b>



FN356E

## Panou lateral

Descriere	Amb.	Art Nr.
Panou lateral H1900 L400	1	<b>FN356E</b>
Panou lateral. H1900 L600	1	<b>FN366E</b>
Panou lateral H1900 L800	1	<b>FN376E</b>
Panou lateral H2100 L600	1	<b>FN367E</b>
Panou lateral H2100 L800	1	<b>FN377E</b>
Panou lateral H2100 L400	1	<b>FN357E</b>



FN942E

## Panou acoperire

Descriere	Amb.	Art Nr.
Panou acoperire P400	1	<b>FN942E</b>
Panou acoperire P600	1	<b>FN943E</b>
Panou acoperire P800	1	<b>FN944E</b>